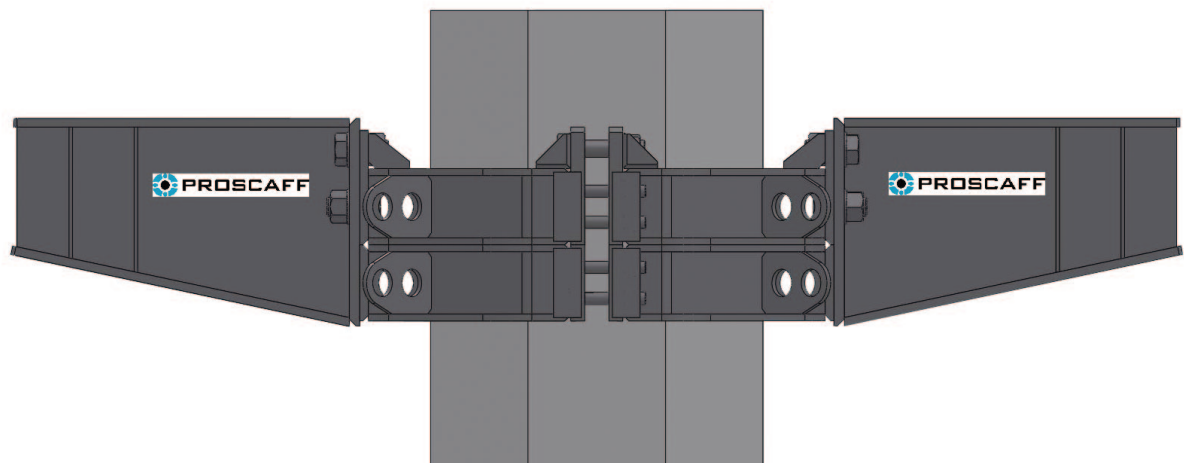




PROSCAFF ENTERPRISES INC.
FRICITION COLLAR SHORING

INTRODUCTION

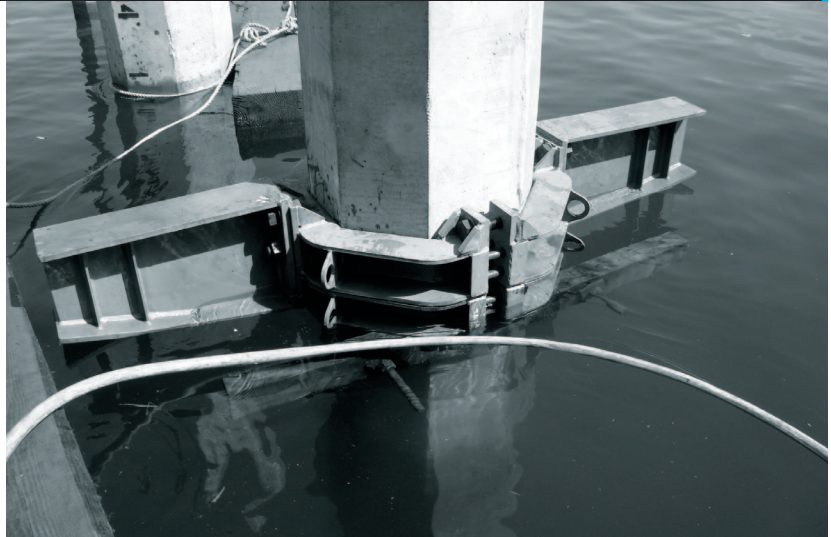
Used in marine applications or where shoring from below is not possible.



Product Capacity

PRODUCT CAPACITY ON EACH SIDE

- 100,000 lbs
- Total: 200,000 lbs FOS 2.5:1
- If used in pairs + fillers, capacity increases to 150,000 lbs on each side, total 300,000 lbs.



General Specifications

GENERAL SPECIFICATIONS

- Pillar diameter: 24", or made to specification.
- Side Support span on one side 30", or made to specification
- Overall product span: 84.25"
- Total weight: 690 lbs, separated in 6 components
 - 2 upper collar halves
 - 2 lower collar halves
 - 2 side supports

